

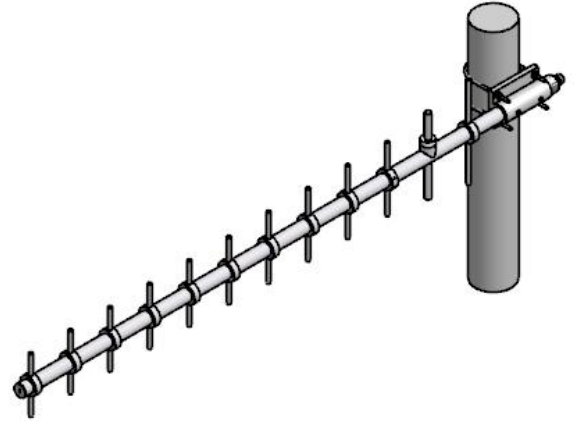
CELLULAR YAGI Antenna

824~894 MHz / 12 dBi



YG-12E-CT

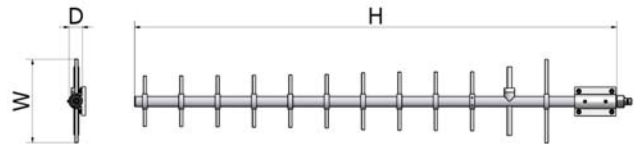
i. Electrical Specification

Frequency Range	824~894 MHz	
Polarization	Vertical	
Band Width	70 MHz	
Gain	≥ 12 dBi	
Beam width	Horizontal	≥ Nominal 33°
	Vertical	≥ Nominal 30°
F-B ratio	≥ 15	
VSWR	1 : 1.5	
Impedance	50 Ω	
Maximum input power	100 W	

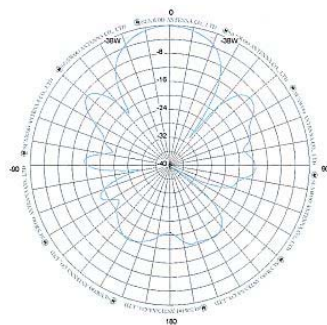


ii. Mechanical Specification

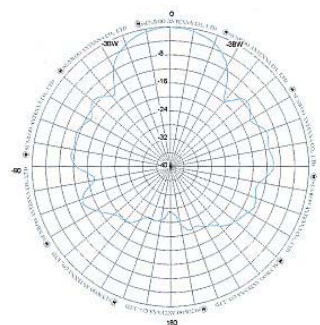
Radom Dimension (H x W x D)	1240 x 180 x 50 mm	
Weight (Include bracket)	≤ 1490 g	
Connector Type	N-Female	
Withstand Wind Pressure	60 m/sec	
Radome Material	AL	
Radome Color		
	Cool Gray 1C	Cool Gray 4C
Mechanical Down Tilt	-	
	-	
Temperature	-40 °C ~ 70 °C	
Packing Size (H x W x D) 10SET	-	
Packing Weight 10SET	-	



iii. Radiation Pattern



Horizontal Pattern



Vertical Pattern